

Embryo transfer

EmbryoGlue® 1 × 10 mL

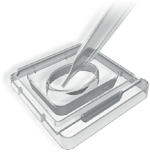
Directions for supplementation of un-supplemented G-Series™ media can be found in the G-Series manual on www.vitrolife.com. Once supplemented, the media should be used as the G-Series PLUS media described below.

Before transfer



EmbryoGlue®

1. Prepare rinsed centre well dishes with 1.0 mL of EmbryoGlue in the well and 1.0 - 2.0 mL in the moat and pre-equilibrate at



37°C 6% CO₂
4-24 h

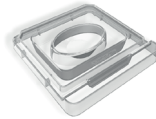
Ensure use of non-toxic contact materials.

Day of transfer

The embryo transfer is always performed the same way, regardless of transfer day.

1. Pre-equilibration of embryos

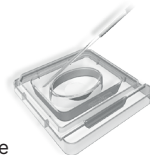
Place the embryos in the well containing equilibrated EmbryoGlue for a minimum of 10 minutes before transfer. Equilibrate until transfer at



37°C 6% CO₂
Min 10 min

2. Rinse the transfer catheter

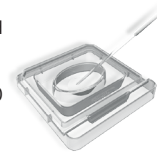
Rinse a 1 mL nontoxic syringe by drawing up and then out EmbryoGlue from the moat several times until no air bubbles are observed in the syringe. Draw up approximately 0.5 mL of the equilibrated medium from the moat.



3. Load the catheter

After rinsing, draw 0.1 mL of EmbryoGlue from the well of the dish and expel until 20 µL is left in the catheter.

Under microscopic control, gently load the embryos into the catheter in approximately 5-10 µL of EmbryoGlue followed by a small volume of air.



4. Embryo transfer

For the embryo transfer, expel the embryos in approximately 30 µL and **slowly withdraw the catheter while maintaining the steady pressure on the plunger of the syringe.**

Make a final examination of the catheter.